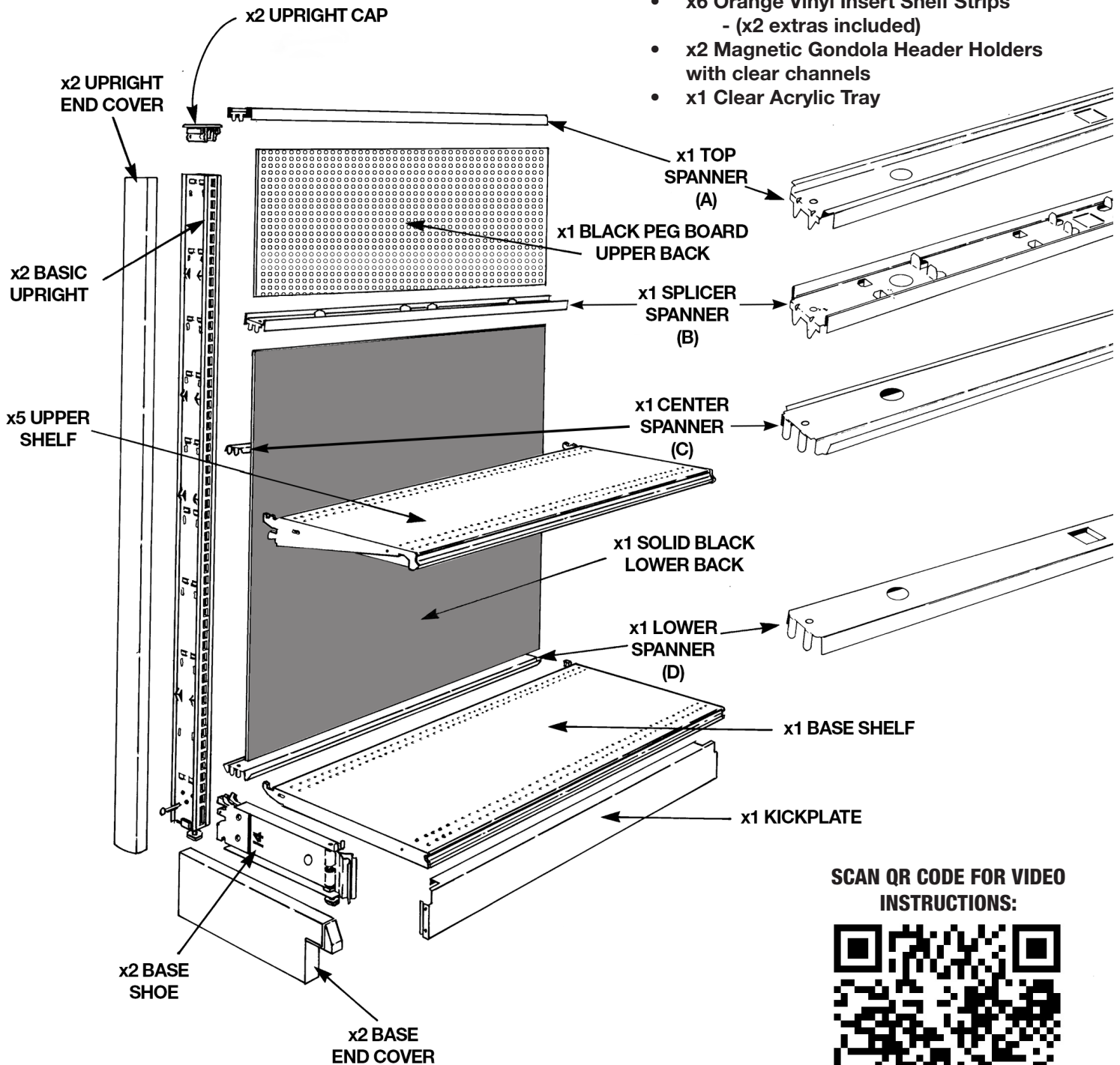


Gondola Parts Identification:

Also Included:

- x1 DeckWise® Gondola Header
- x2 Peg Hooks
- x6 Orange Vinyl Insert Shelf Strips
- (x2 extras included)
- x2 Magnetic Gondola Header Holders
with clear channels
- x1 Clear Acrylic Tray



SCAN QR CODE FOR VIDEO
INSTRUCTIONS:

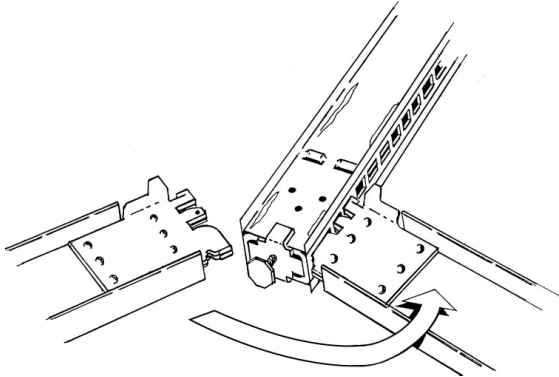


Assembly Procedure:

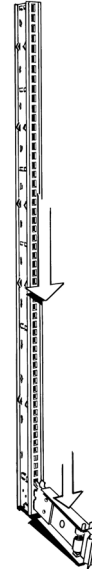
Step 1) Insert base shoes into both uprights. Shoes do not have to be locked in at this time. Screw upright bottom levelers out approximately 1/4".

Step 2) Raise first upright to vertical and push down firmly. Base shoes should lock in, if they do not lock in, step firmly on top of shoe to lock.

STEP 1: ENGAGE SHOES INTO UPRIGHT SLOTS



STEP 2: ENGAGE SHOES FULLY BY PUSHING DOWN ON UPRIGHTS



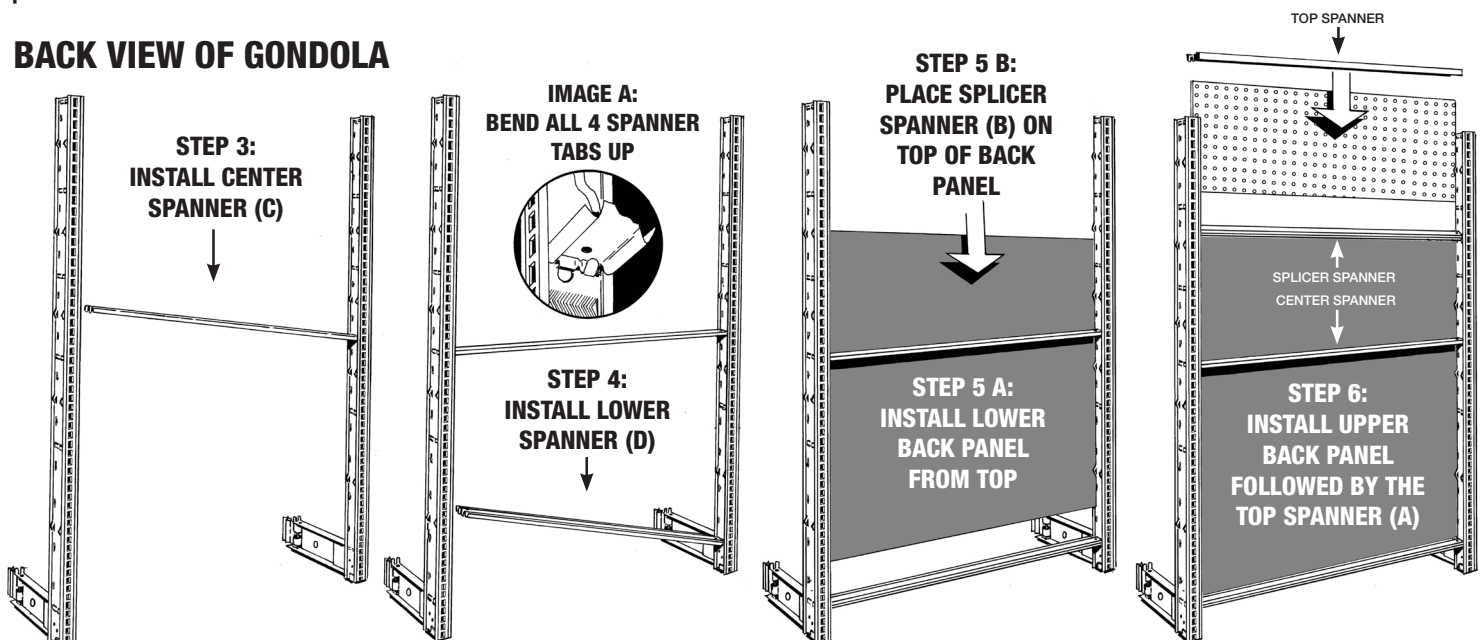
Step 3) Raise second upright to vertical, lock base shoes and install center spanner. Check to make sure the spanner tabs are visible below the brackets on the inside of the uprights.

Step 4) Install lower spanner. The spanner tab opposite the back should be bent upward to prevent the spanner from moving. (See Image A)

Step 5 A) Install the solid black lower back panel from the top. This panel will rest in front of the center spanner. Step 5 B) Place the splicer spanner on top of the lower back.

Step 6) Install the peg board upper back panel from the top. Place the top spanner on top of the upper back panel.

BACK VIEW OF GONDOLA



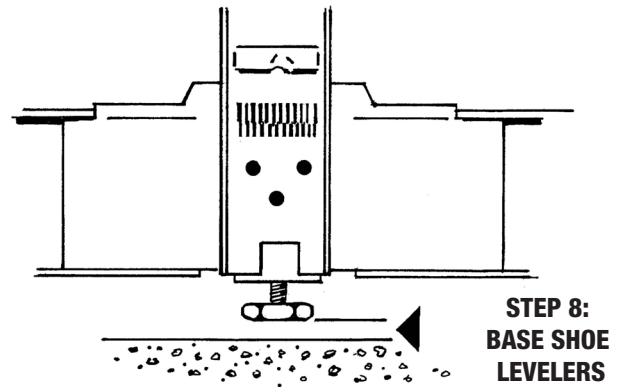
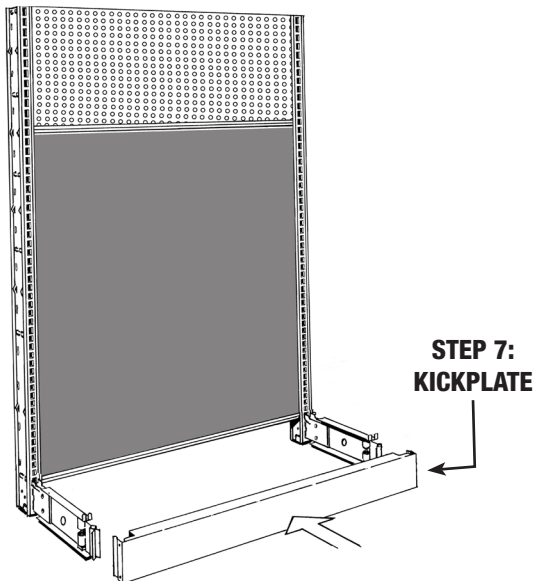
WARNING!

Never allow framework to stand alone until a back panel is in place. Framework may fall! CENTER SPANNERS must be installed!

Step 7) Install the kickplate. Kickplate snaps in directly from the front.

Step 8) Pull both uprights forward until the kickplate is vertical (plumb). Use a level against the front of the uprights to check alignment. Place level over base shoes and adjust the base shoe levelers as needed.

FRONT VIEW OF GONDOLA



WARNING! NEVER EXTEND LEVEL LEGS OVER 1/2"!

Step 9) Install upright end covers. These must be in place before the upright caps are installed.

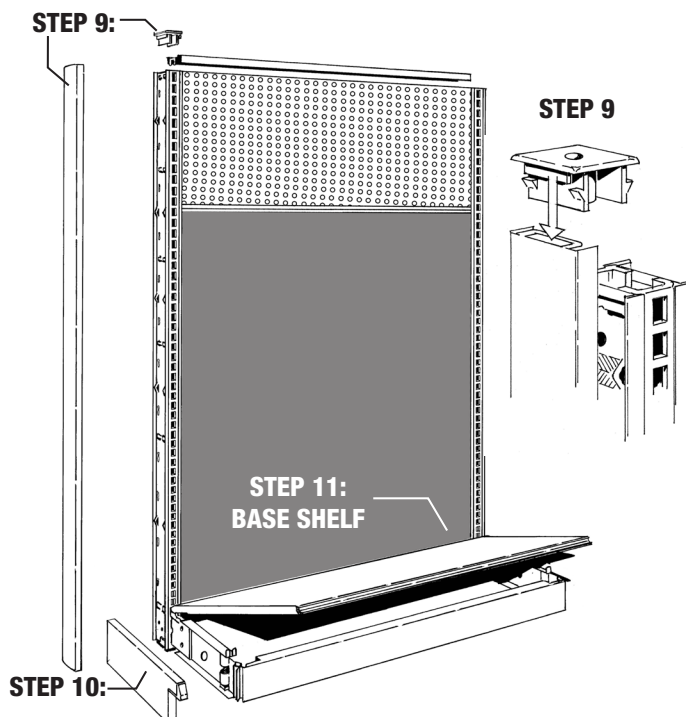
Step 10) To install the base end covers, simply slide them over the base shoes. The base end covers are held in place by the base shelves.

Step 11) Install base shelf. Visually check base shelf alignment.

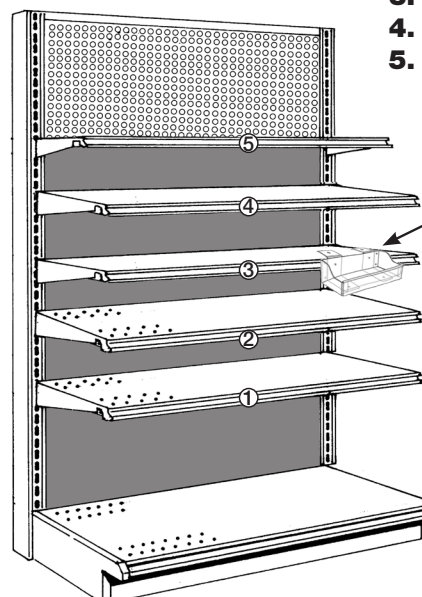
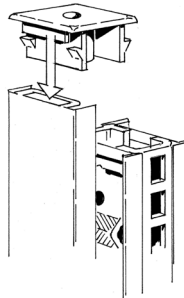
Step 12) Install 5 upper shelves. See shelf heights below.

Step 13) Install the clear acrylic tray using its brackets to lock the tray into the holes on top of shelf #3.

FRONT VIEW OF GONDOLA



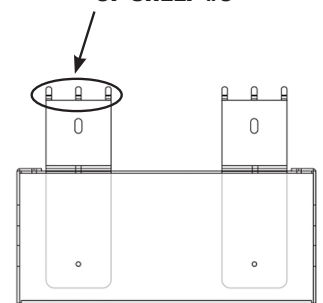
STEP 9



**STEP 12: SHELF HEIGHTS
FROM FLOOR:**

- 1. 22 1/2"**
- 2. 33 1/2"**
- 3. 43 1/2"**
- 4. 53 1/2"**
- 5. 64 1/2"**

**STEP 13: INSTALL THE
ACRYLIC TRAY USING
SLIDING BRACKETS.
ATTACH ON TO THE TOP
OF SHELF #3**



Step 14) Take the clear sign-holding channels and slide them onto each side of the gondola header sign. Make sure the channels are aligned with the bottom edge of the sign.

Step 15) Carefully slide the bottom corners of the sign (with the channels attached) into both magnetic bases.

Step 16) Position the magnetic bases on to the top spanner of your gondola shelf. The strong magnets will hold the sign securely in place.

**STEP 14:
SLIDE THE CLEAR CHANNELS ON
EACH SIDE OF THE HEADER**



**STEP 15:
SLIDE THE CORNERS INTO THE
MAGNETIC BASES**



**STEP 16:
PLACE THE MAGNETIC BASES
ON TO THE TOP SPANNER**

