

DeckWise® • The Ipe Clip® Fastener Company, LLC • 2111 58th Ave. E, Bradenton, FL 34203
Tel: 941-896-9851 • Toll Free: 866-427-2547 • info@DeckWise.com • www.DeckWise.com



WiseWrap® JoistTape™ is a malleable polyethylene waterproof wood flashing material. It is made of a rubberized asphalt mastic adhesive. Apply to decking joists, around deck support posts and over ledger boards.

INTENDED USES

- Joists
- Posts
- Ledger Boards
- Cut Ends & More!

SURFACE PREPARATION:

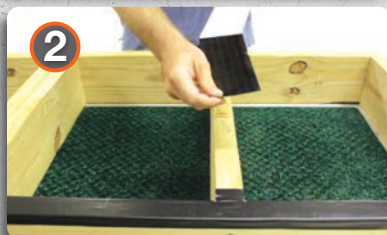
All surfaces to receive WiseWrap® JoistTape™ must be clean, dry, and free from oil, grease and debris. WiseWrap® JoistTape™ should be applied only when temperatures are 35°F or warmer. In colder temperatures, or for difficult applications, use construction grade spray adhesive. Attach with staples if necessary.



STEP 1 - Cut WiseWrap™ Joist Tape™ to Length

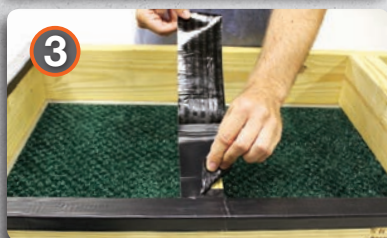
Unroll enough WiseWrap® JoistTape™ to match the span of the joist you are covering. Allow for 3/4" of tape overhang on each end. Cut the WiseWrap® JoistTape™ to length. Long joist spans should be taped before shorter ones.

NOTE: On double joists, cut WiseWrap® JoistTape™ to length and overlap the parallel joists at least 1/2" to 3/4".



STEP 2 - Peel Off Backing

Peel off the release liner backing and begin adhering the WiseWrap® JoistTape™ to one end of the joist.



STEP 3 - Apply WiseWrap® Joist Tape™

WiseWrap® JoistTape™ must overlap any previous tape on adjoining joist runs and/or any ledger board side edges must have an overlap. Slightly stretch the WiseWrap® JoistTape™ to avoid wrinkles and press the self-adhesive side down as you move along the length.



STEP 4 - Center WiseWrap® JoistTape™ Over Joist

Leave equal amounts overhanging the joist sides when centering WiseWrap® JoistTape™ over the top edge.



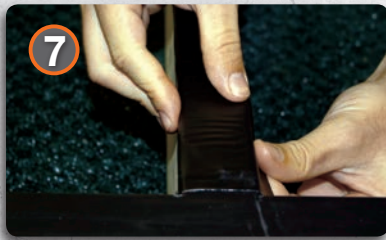
STEP 5 - Fold Edges Down Over Sides

Press WiseWrap® JoistTape™ down securely onto edge. Fold the tape sides down. Then, press firmly to adhere the sides. (Staple edge and sides if necessary.)



STEP 6 - Trim WiseWrap® Joist Tape™ Inside Corners

Where inside corners exist, cut the WiseWrap® JoistTape™ with scissors and fold the inside down. Overlap tape ends. On outside corners, cut and tuck the corners under itself for a crisp corner.



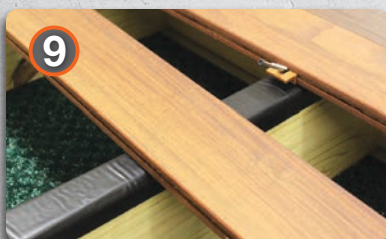
STEP 7 - Cut and Fold Adjacent Runs

Cut WiseWrap® JoistTape™ on it's side edge when applied to adjacent joist runs. Then fold edges down. Overlap as needed to maintain 1/2" to 3/4" coverage. See image on STEP 3.



STEP 8 - Smooth Out Tape Surface

Finish by pressing all tops and sides down tightly. Cut and tuck WiseWrap® JoistTape™ around corners where applicable. Use a roller for a smooth flat surface.



STEP 9 - Install Deck Fasteners

Ipe Clip® Hidden Deck Fasteners and other deck fastening methods are installed in their normal manners. WiseWrap® JoistTape™ will seal around penetrating fastening screws and act as a sound dampening membrane.

For warranty information visit www.deckwise.com/warranty and for installation video visit www.deckwise.com/videos.